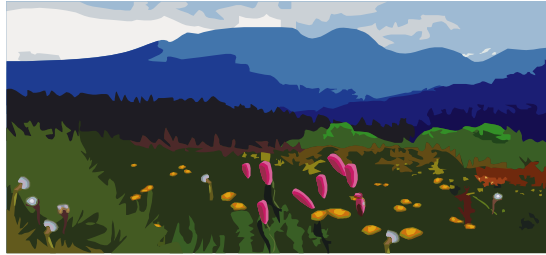


Sacred Mountains

Teaching the Path of Life and Wisdom



Prayer Day Pilgrimage on Mount Taylor Saturday, May 9, 2009

The Presbyterian Sacred Mountain Learning Center Camp

Mount Taylor (directions attached, meet at 9:00 at Conoco at Laguna exit to carpool)

(The camp is lovely, with glorious view of Mount Taylor and abundant evergreens and visitations by wild horses, turkeys, elk and other brothers and sisters.)

Mount Taylor, is a sacred mountain for Native Peoples of the Southwest. It reflects the sacredness of mountains in many spiritual traditions, embodying stories and wisdom teachings passed on over countless generations. Participants come as wisdom seekers, open to listening and learning stories of the Mountain. Together, we will be renewed and recommit ourselves to the spiritual path of life and wisdom for the protection of the Mountain, for the wellbeing of the Sacred Earth Community.

Retreat day Schedule:

10:00 am Meet at Presbyterian Camp on Mount Taylor

10:00 – 10:15 Opening prayer ritual

10:15 – 11:15 Stories about the sacredness of mountains and Mount Taylor from indigenous and Christian perspectives

11:15 - 12:00 Sandwich fixings provided. Bring cookies, fruit, veggies or chips to share and your own water.

12:00 – 1:15 Silent Meditative Time to walk and sit with the Mountain

1:15 Closing Circle of prayer and future actions to protect earth and the Sacred Mountain

Please RSVP so we can organize carpooling

Dress in layers, bring water, something for lunch, chair/blanket

Contact Joan at 505-266-6966, Rose Marie at 505-722-4407 x103

*Sponsored by Stewards of Creation and Partnership for Earth Spirituality
www.earthspirituality.org*

Directions to Presbyterian Camp (Sacred Mountain Learning Camp)

From I-40:

- ▶ Take Exit 114 – Laguna Exit
- Turn Left after crossing I – 40 overpass (coming from Gallup)
- Pass Old Laguna sign on right side
- ▶ Turn Right at Juncture of Hwy 124 and Hwy 279 - continuing on Hwy 279 going up mountain – (for about 5 minutes)
- ▶ Turn Left onto Old Highway 279 (will see weathered sign of brown arrowhead on left)
 - will pass Matic Building on right; pass Laguna Construction sign on right
 - will also see Jackpile mine site in valley below on right
- ▶ Turn Left onto unpaved dirt road: will see Sacred Mountain Camp sign at entrance of dirt road; continue up the mountain; road is rocky, uneven and rugged.
- ▶ At first Fork - Keep to the Right
- ▶ At second Fork – Keep to the Right
- ▶ Will come to and cross over a cattle guard with fence; Private Property Sign
- ▶ Cross over a second cattle guard with fence.
- ▶ Will come to a low green gate with sign: “Unlawful to Hunt & Fish on Private Property” (Forestry Dept. sign) Gate not locked so can open it.
- ▶ At next Fork go left (will see blue sign – Sacred Mountain Learning Center
- ▶ At next Fork go Right, continue going right
- ▶ Turn Left at the next Fork – can see brown cabin: continue and will come to main compound of camp; main house and turtle amphitheatre,

It takes 35 minutes from Exit 114 to the Sacred Mountain Camp site. Since the unpaved road is very uneven, rugged and rocky, car pooling in higher cars or 4 wheel drive cars is recommended.